

C55b FINE PITCH BOX HEADER R/A

PITCH: 1.27mm * 2.54mm

SPECIFICATIONS

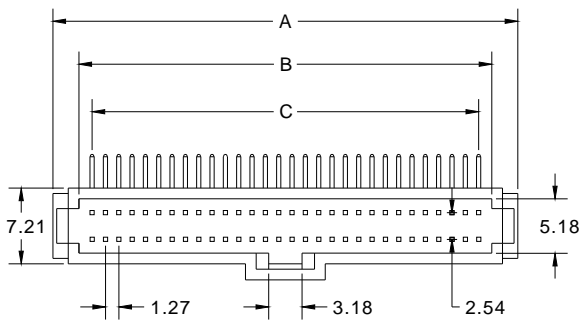
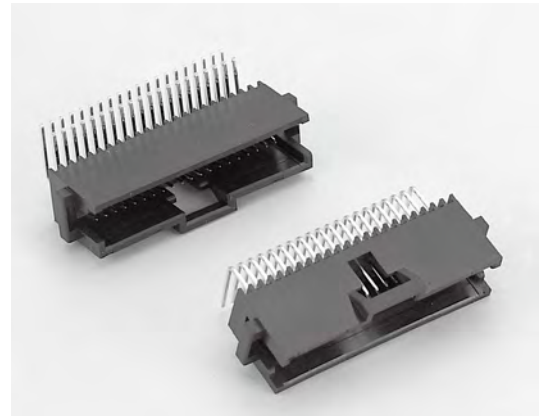
Material

Insulator : LCP, glass reinforced, rated UL 94V-0
 Contact : Phosphor Bronze

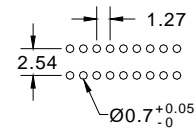
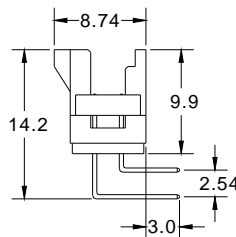
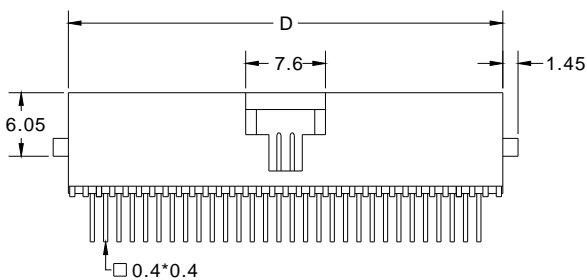
Electrical

Current Rating : 1 Amp
 Contact Resistance : 30 mΩ max.
 Insulation Resistance : 1000 MΩ min.
 Dielectric Withstanding Voltage : 250V AC for 1minute
 Operating Temperature : -40°C to +105°C

► Mating Suggestion : A06, A63 & B15c series.



POSITION	A	B	C	D
10	12.54	7.59	5.08	9.64
14	15.08	10.13	7.62	12.18
16	16.35	11.40	8.89	13.45
20	18.89	13.94	11.43	15.99
24	21.43	16.48	13.97	18.53
26	22.70	17.75	15.24	19.80
30	25.24	20.29	17.78	22.34
34	27.78	22.83	20.32	24.88
40	31.59	26.64	24.13	28.69
44	34.13	29.18	26.67	31.23
50	37.94	32.99	30.48	35.04
60	44.29	39.34	36.83	41.39
64	46.83	41.88	39.37	43.93
68	49.37	44.42	41.91	46.47
72	51.91	46.96	44.45	49.01
80	56.99	52.04	49.53	54.09
100	69.69	64.74	62.23	66.79



RECOMMENDED P.C.B LAYOUT



How to order: C55b - 1 - 2 - 3 - 4 - G(RoHS)

1.NO. OF CONTACT	2.CONTACT MATERIAL	3.CONTACT PLATING	4.INSULATOR COLOR
10 14 16 20 24 26 30 34 40 44 50 60 64 68 72 80 100	B: PHOSPHOR BRONZE	T: TIN PLATED S: SELECTIVE G: GOLD FLASH A: 5u" INCH GOLD B: 10u" INCH GOLD C: 15u" INCH GOLD D: 30u" INCH GOLD	1. BLACK