

# C61 FINE PITCH SHROUDED HEADER R/A

**PITCH: 1.27mm \* 2.54mm**

## SPECIFICATIONS

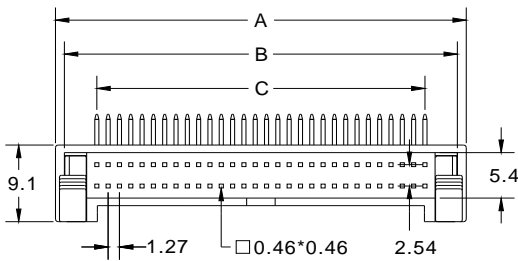
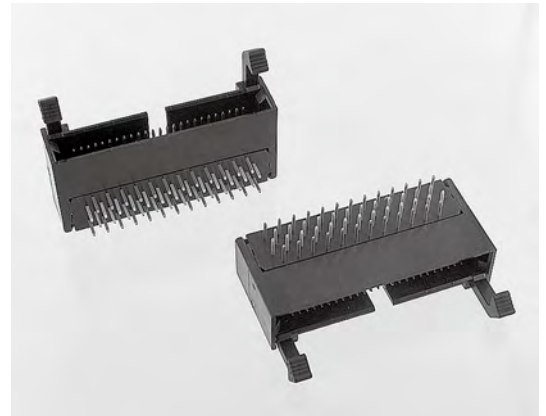
### Material

Insulator : PBT, glass reinforced, rated UL 94V-0  
 Contact : Phosphor Bronze

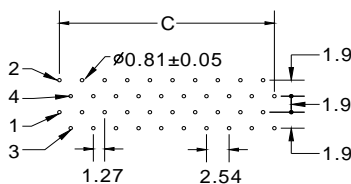
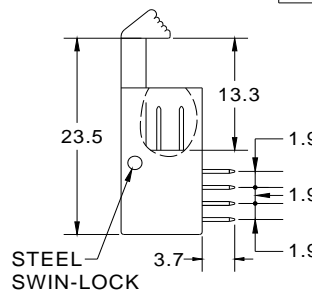
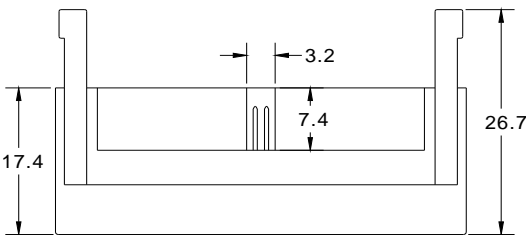
### Electrical

Current Rating : 1 Amp  
 Contact Resistance : 30 mΩ max.  
 Insulation Resistance : 1000 MΩ min.  
 Dielectric Withstanding Voltage : 250V AC for 1minute  
 Operating Temperature : -40°C to +105°C

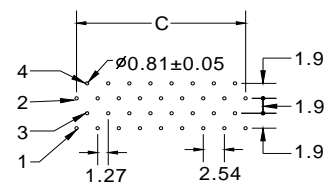
► Mating Suggestion : A06a series.



| POSITION | A     | B     | C     |
|----------|-------|-------|-------|
| 10       | 14.36 | 12.36 | 5.08  |
| 20       | 20.71 | 18.71 | 11.43 |
| 26       | 24.52 | 22.52 | 15.24 |
| 30       | 27.06 | 25.06 | 17.78 |
| 34       | 29.60 | 27.60 | 20.32 |
| 40       | 33.41 | 31.41 | 24.13 |
| 50       | 39.76 | 37.76 | 30.48 |
| 60       | 46.11 | 44.11 | 36.83 |
| 68       | 51.19 | 49.19 | 41.91 |
| 80       | 58.81 | 56.81 | 49.53 |
| 100      | 71.51 | 69.51 | 62.23 |



P.C. BOARD LAYOUT FOR  
20,40,60,68,80,100



P.C. BOARD LAYOUT FOR  
10,26,30,34,50

**How to order:** C61 - 1 - 2 - 3 - 4 - G(RoHS)

| 1.NO. OF CONTACT                     | 2.CONTACT MATERIAL | 3.CONTACT PLATING   | 4.INSULATOR COLOR |
|--------------------------------------|--------------------|---|-------------------|
| 10 20 26 30 34 40<br>50 60 68 80 100 | B: PHOSPHOR BRONZE | T: TIN PLATED<br>S: SELECTIVE<br>G: GOLD FLASH<br>A: 5u" INCH GOLD<br>B: 10u" INCH GOLD<br>C: 15u" INCH GOLD<br>D: 30u" INCH GOLD | 1. BLACK          |