

# C74d FINE PITCH FOUR WALL HEADER STR

**PITCH: 1.27mm \* 2.54mm**

## SPECIFICATIONS

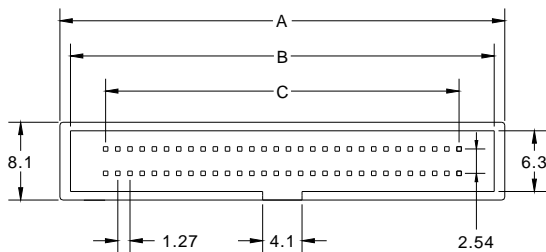
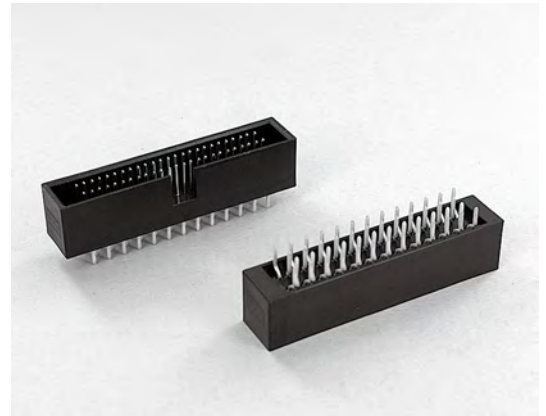
### Material

Insulator : PBT, glass reinforced, rated UL 94V-0  
 Contact : Phosphor Bronze

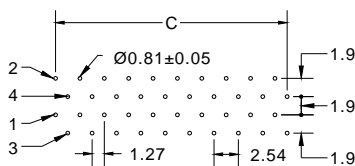
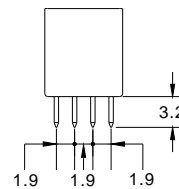
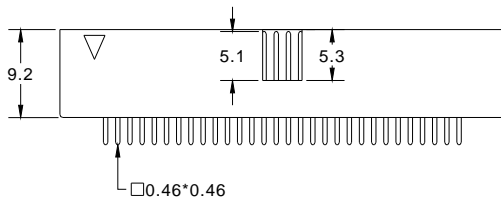
### Electrical

Current Rating : 1 Amp  
 Contact Resistance : 30 mΩ max.  
 Insulation Resistance : 1000 MΩ min.  
 Dielectric Withstanding Voltage : 250V AC for 1minute  
 Operating Temperature : -40°C to +105°C

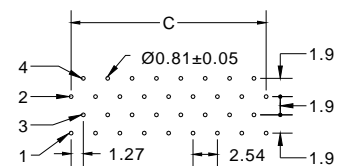
► Mating Suggestion : A42 series.



POSITION	A	B	C
10	14.60	12.40	5.08
20	20.95	18.75	11.43
26	24.76	22.56	15.24
30	27.30	25.10	17.78
34	29.84	27.64	20.32
40	33.65	31.45	24.13
50	40.00	36.86	30.48
60	46.35	44.15	36.83
68	51.43	49.23	41.91
80	59.05	56.85	49.53
100	71.75	69.55	62.23



P.C.BOARD LAYOUT FOR  
20,40,60,68,80,100



P.C.BOARD LAYOUT FOR  
10,26,30,34,50,70,90

**How to order:** C74d - 1 - 2 - 3 - 4 - G(RoHS)

1.NO. OF CONTACT	2.CONTACT MATERIAL	3.CONTACT PLATING	4.INSULATOR COLOR
10 20 26 30 34 40 50 60 68 80 100	B: PHOSPHOR BRONZE	T: TIN PLATED S: SELECTIVE G: GOLD FLASH A: 5u" INCH GOLD B: 10u" INCH GOLD C: 15u" INCH GOLD D: 30u" INCH GOLD	1. BLACK

