

C74e FINE PITCH FOUR WALL HEADER WITH MOUNTING EAR STR

PITCH: 1.27mm * 2.54mm

SPECIFICATIONS

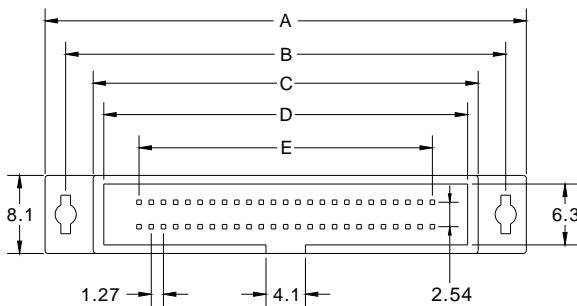
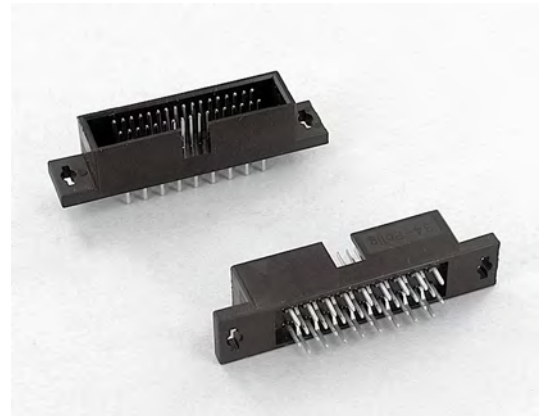
Material

Insulator : PBT, glass reinforced, rated UL 94V-0
 Contact : Phosphor Bronze

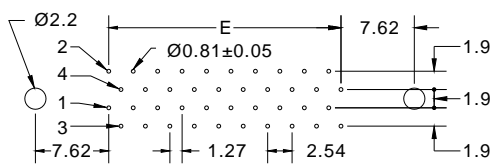
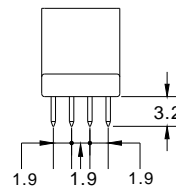
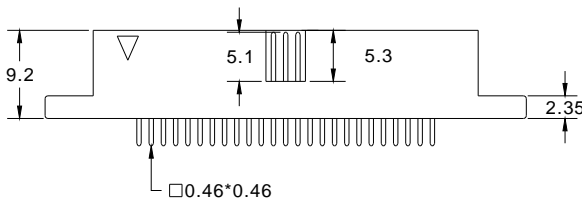
Electrical

Current Rating : 1 Amp
 Contact Resistance : 30 mΩ max.
 Insulation Resistance : 1000 MΩ min.
 Dielectric Withstanding Voltage : 250V AC for 1minute
 Operating Temperature : -40°C to +105°C

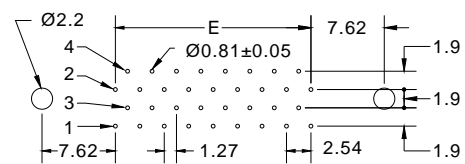
► Mating Suggestion : A42 series.



POSITION	A	B	C	D	E
10	24.60	20.32	14.60	12.40	5.08
20	30.95	26.67	20.95	18.75	11.43
26	34.76	30.48	24.76	22.56	15.24
30	37.30	33.02	27.30	25.10	17.78
34	39.84	35.56	29.84	27.64	20.32
40	43.65	39.37	33.65	31.45	24.13
50	50.00	45.72	40.00	36.86	30.48
60	56.35	52.07	46.35	44.15	36.83
68	61.43	57.15	51.43	49.23	41.91
80	69.05	64.77	59.05	56.85	49.53
100	81.75	77.47	71.75	69.55	62.23



P.C. BOARD LAYOUT FOR 20,40,60,68,80,100



P.C. BOARD LAYOUT FOR 10,26,30,34,50,70,90

How to order: C74e - 1 - 2 - 3 - 4 - G(RoHS)

1.NO. OF CONTACT	2.CONTACT MATERIAL	3.CONTACT PLATING	4.INSULATOR COLOR
10 20 26 30 34 40 50 60 68 80 100	B: PHOSPHOR BRONZE	T: TIN PLATED S: SELECTIVE G: GOLD FLASH A: 5u" INCH GOLD B: 10u" INCH GOLD C: 15u" INCH GOLD D: 30u" INCH GOLD	1. BLACK