

C96 FINE PITCH SHROUDED HEADER STR

PITCH: 1.27mm * 2.54mm

SPECIFICATIONS

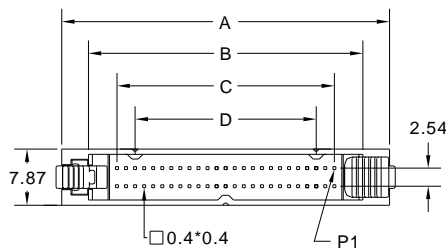
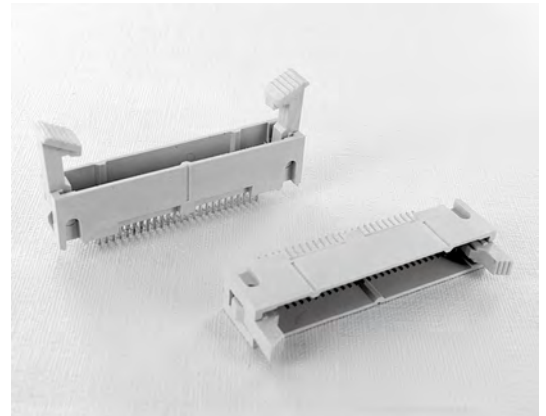
Material

Insulator : LCP, glass reinforced, rated UL 94V-0
 Contact : Phosphor Bronze

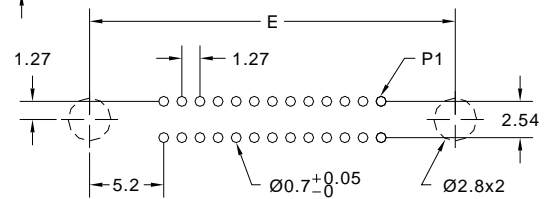
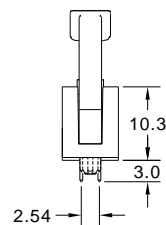
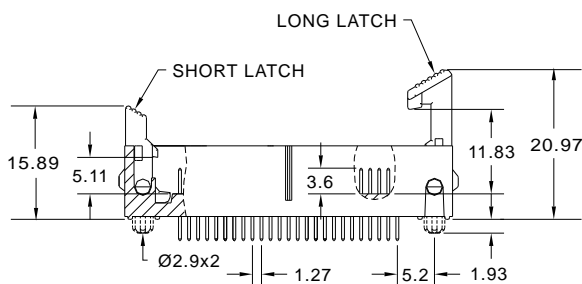
Electrical

Current Rating : 1 Amp
 Contact Resistance : 30 mΩ max.
 Insulation Resistance : 1000 MΩ min.
 Dielectric Withstanding Voltage : 250V AC for 1minute
 Operating Temperature : -40°C to +105°C

► Mating Suggestion : A53 series.



POSITION	A	B	C	D	E
10	20.57	13.08	5.08	--	15.50
20	26.92	19.43	11.43	6.35	21.85
26	30.73	23.24	15.24	10.16	25.66
30	33.27	25.78	17.78	12.70	28.20
34	35.81	28.32	20.32	15.24	30.74
36	37.08	29.59	21.59	16.51	32.01
40	39.62	32.13	24.13	19.05	34.55
50	45.97	38.48	30.48	25.40	40.90
60	52.32	44.83	36.83	31.75	47.25
68	57.40	49.91	41.91	36.83	52.33
80	65.02	57.53	49.53	44.45	59.95
100	77.72	70.23	62.23	57.15	72.65



RECOMMENDED P.C.B LAYOUT

How to order: C96 - 1 - 2 - 3 - 4 - 5 - 6 - G(RoHS)

1.NO. OF CONTACT	2.CONTACT MATERIAL	3.CONTACT PLATING	4.ACCESSORIES	5. SPECIAL FUNCTION	6.INSULATOR COLOR
10 20 26 30 34 40 50 60 68 80 100	B: PHOSPHOR BRONZE	T: TIN PLATED S: SELECTIVE G: GOLD FLASH A: 5u" INCH GOLD B: 10u" INCH GOLD C: 15u" INCH GOLD D: 30u" INCH GOLD	A: LONG LATCH B: SHORT LATCH C: W/O ANY LATCH	A: WITH LOCATING PEG B: W/O LOCATING PEG	9. IVORY