

C05g LOW PROFILE BOX HEADER SMT

PITCH: 2.0mm * 2.0mm

SPECIFICATIONS

Material

Insulator : LCP, glass reinforced, rated UL 94V-0

Contact : Brass

Electrical

Current Rating : 1 Amp

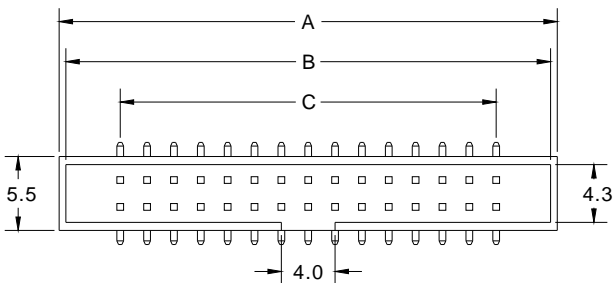
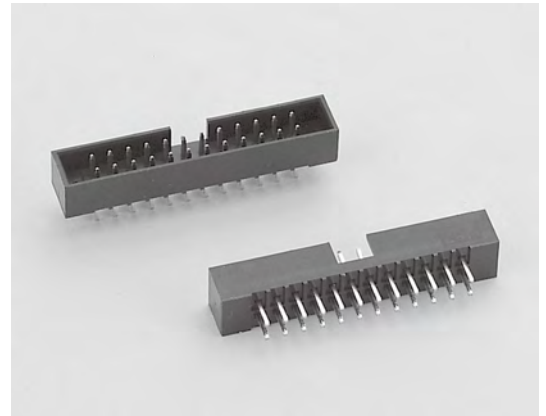
Contact Resistance : 30 mΩ max.

Insulation Resistance : 3000 MΩ min.

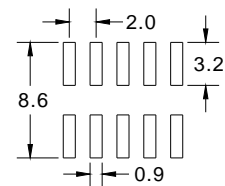
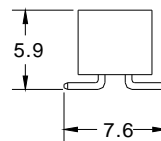
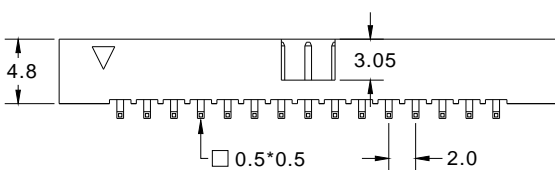
Dielectric Withstanding Voltage : 500V AC for 1minute

Operating Temperature : -40°C to +105°C

► Mating Suggestion : A05b series.



| POSITION | A | B | C |
|----------|-------|-------|-------|
| 6 | 12.00 | 10.60 | 4.00 |
| 8 | 14.00 | 12.60 | 6.00 |
| 10 | 16.00 | 14.60 | 8.00 |
| 12 | 18.00 | 16.60 | 10.00 |
| 14 | 20.00 | 18.60 | 12.00 |
| 16 | 22.00 | 20.60 | 14.00 |
| 20 | 26.00 | 24.60 | 18.00 |
| 22 | 28.00 | 26.60 | 20.00 |
| 24 | 30.00 | 28.60 | 22.00 |
| 26 | 32.00 | 30.60 | 24.00 |
| 30 | 36.00 | 34.60 | 28.00 |
| 34 | 40.00 | 38.60 | 32.00 |
| 36 | 42.00 | 40.60 | 34.00 |
| 40 | 46.00 | 44.60 | 38.00 |
| 44 | 50.00 | 48.60 | 42.00 |
| 50 | 56.00 | 54.60 | 48.00 |



RECOMMENDED P.C.B LAYOUT



How to order: C05g - 1 - 2 - 3 - 4 - 5 - G(RoHS)

| 1.NO. OF CONTACT | 2.CONTACT MATERIAL | 3.CONTACT PLATING | 4.PACKAGING | 5.INSULATOR COLOR |
|---|--------------------|--|---|-------------------|
| 06 08 10 12 14 16 20 22 24 26 30 34 36 40 44 50 | A: BRASS | T: TIN PLATED S: SELECTIVE G: GOLD FLASH A: 5u" INCH GOLD B: 10u" INCH GOLD C: 15u" INCH GOLD D: 30u" INCH GOLD | A:TUBE WITH PAD B: TUBE W/O PAD C: TAPE & REEL WITH PAD | 1. BLACK |



DON CONNEX
ELECTRONICS CO., LTD

T:886 2 86483356 | F:886 2 86485885
e-mail: info@donconnex.com.tw



Connector: E163339 | Flat cable: E162690
Wiring Harnesses: E312257