

C06f BOX HEADER WITH UNDERCUT R/A

PITCH: 2.0mm * 2.0mm

SPECIFICATIONS

Material

Insulator : LCP, glass reinforced, rated UL 94V-0

Contact : Brass

Electrical

Current Rating : 1 Amp

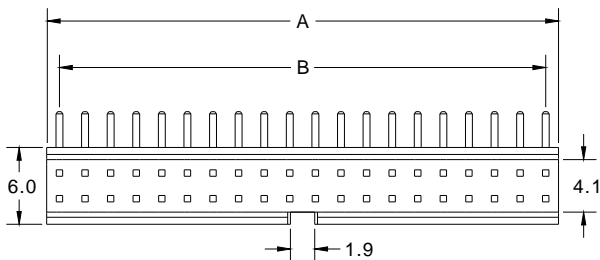
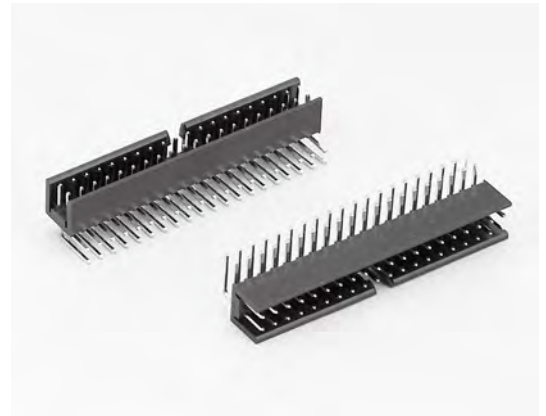
Contact Resistance : 30 mΩ max.

Insulation Resistance : 3000 MΩ min.

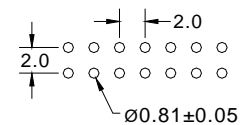
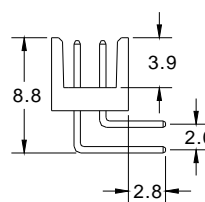
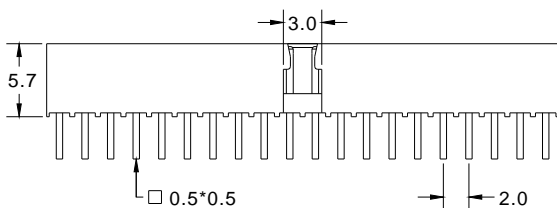
Dielectric Withstanding Voltage : 500V AC for 1minute

Operating Temperature : -40°C to +105°C

► Mating Suggestion : A05c series.



| POSITION | A | B |
|----------|------|------|
| 6 | 6.0 | 4.0 |
| 8 | 8.0 | 6.0 |
| 10 | 10.0 | 8.0 |
| 12 | 12.0 | 10.0 |
| 14 | 14.0 | 12.0 |
| 16 | 16.0 | 14.0 |
| 20 | 20.0 | 18.0 |
| 22 | 22.0 | 20.0 |
| 24 | 24.0 | 22.0 |
| 26 | 26.0 | 24.0 |
| 30 | 30.0 | 28.0 |
| 34 | 34.0 | 32.0 |
| 40 | 40.0 | 38.0 |
| 44 | 44.0 | 42.0 |
| 50 | 50.0 | 48.0 |
| 68 | 68.0 | 66.0 |



RECOMMENDED P.C.B LAYOUT



How to order: C06f - 1 - 2 - 3 - 4 - G(RoHS)

| 1.NO. OF CONTACT | 2.CONTACT MATERIAL | 3.CONTACT PLATING | 4.INSULATOR COLOR |
|---|--------------------|---|-------------------|
| 06 08 10 12 14 16 20 22 24 26 30 34 40 44 50 68 | A: BRASS | T: TIN PLATED S: SELECTIVE G: GOLD FLASH A: 5u" INCH GOLD B: 10u" INCH GOLD C: 15u" INCH GOLD D: 30u" INCH GOLD | 1. BLACK |