

C06g SHRUNK SHROUDED HEADER R/A

PITCH: 2.0mm * 2.0mm

SPECIFICATIONS

Material

Insulator : PBT, glass reinforced, rated UL 94V-0

Contact : Brass

Electrical

Current Rating : 1 Amp

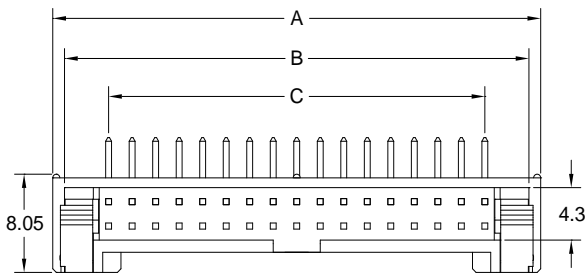
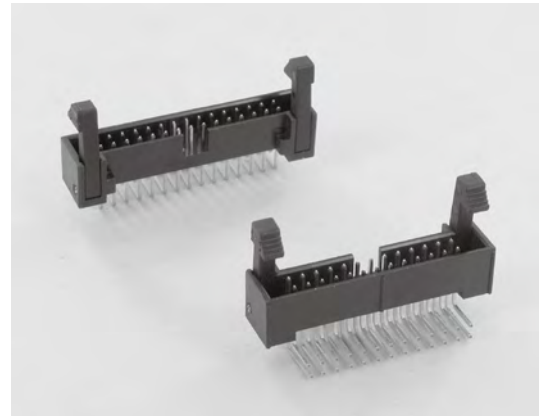
Contact Resistance : 30 mΩ max.

Insulation Resistance : 3000 MΩ min.

Dielectric Withstanding Voltage : 500V AC for 1minute

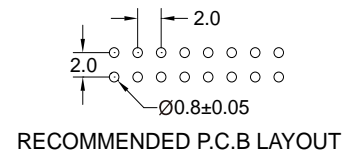
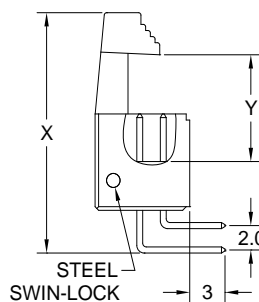
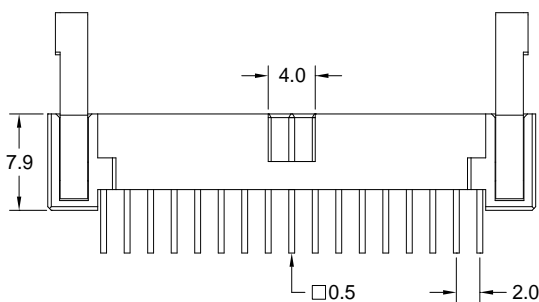
Operating Temperature : -40°C to +105°C

► Mating Suggestion : A05, A05a, A05g & A58 series.



| POSITION | A | B | C |
|----------|------|------|------|
| 8 | 15.5 | 13.5 | 6.0 |
| 10 | 17.5 | 15.5 | 8.0 |
| 12 | 19.5 | 17.5 | 10.0 |
| 14 | 21.5 | 19.5 | 12.0 |
| 16 | 23.5 | 21.5 | 14.0 |
| 20 | 27.5 | 25.5 | 18.0 |
| 22 | 29.5 | 27.5 | 20.0 |
| 24 | 31.5 | 29.5 | 22.0 |
| 26 | 33.5 | 31.5 | 24.0 |
| 30 | 37.5 | 35.5 | 28.0 |
| 34 | 41.5 | 39.5 | 32.0 |
| 40 | 47.5 | 45.5 | 38.0 |
| 44 | 51.5 | 49.5 | 42.0 |
| 50 | 57.5 | 55.5 | 48.0 |
| 68 | 75.5 | 73.5 | 66.0 |

| ACCESSORIES | X | Y |
|-------------|------|-------|
| LONG LATCH | 22.5 | 11.57 |
| SHORT LATCH | 19.7 | 8.75 |



How to order: C06g - 1 - 2 - 3 - 4 - 5 - G(RoHS)

| 1.NO. OF CONTACT | 2.CONTACT MATERIAL | 3.CONTACT PLATING | 4.ACCESSORIES | 5.INSULATOR COLOR |
|--|--------------------|--|---------------------------------|-------------------|
| 08 10 12 14 16 20 22 24 26 30 34 40 44 50 68 | A: BRASS | T: TIN PLATED S: SELECTIVE G: GOLD FLASH A: 5u" INCH GOLD B: 10u" INCH GOLD C: 15u" INCH GOLD D: 30u" INCH GOLD | A: LONG LATCH B: SHORT LATCH | 1. BLACK |