

C72 BOX HEADER WITH POLARIZATION LATCHING SMT

PITCH: 2.0mm * 2.0mm

SPECIFICATIONS

Material

Insulator : LCP, glass reinforced, rated UL 94V-0

Contact : Brass

Electrical

Current Rating : 1 Amp

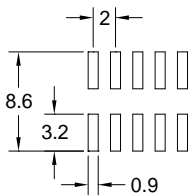
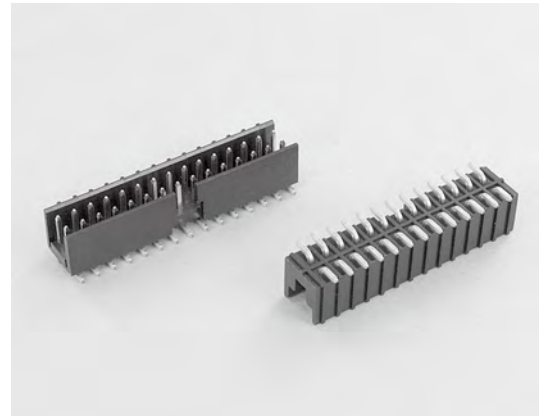
Contact Resistance : 30 mΩ max.

Insulation Resistance : 3000 MΩ min.

Dielectric Withstanding Voltage : 500V AC for 1minute

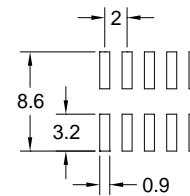
Operating Temperature : -40°C to +105°C

► Mating Suggestion : A05d, B43, B44 & B45 series.

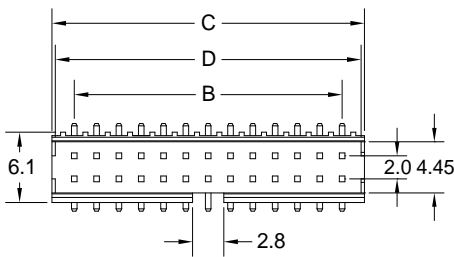


RECOMMENDED P.C.B LAYOUT

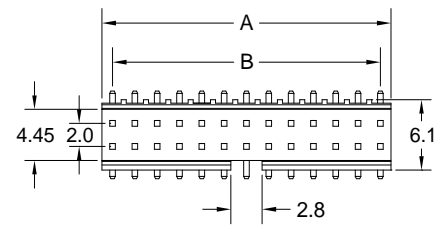
| POSITION | A | B | C | D |
|----------|------|------|------|------|
| 6 | 5.9 | 4.0 | 8.0 | 7.4 |
| 8 | 7.9 | 6.0 | 10.0 | 9.4 |
| 10 | 9.9 | 8.0 | 12.0 | 11.4 |
| 12 | 11.9 | 10.0 | 14.0 | 13.4 |
| 14 | 13.9 | 12.0 | 16.0 | 15.4 |
| 16 | 15.9 | 14.0 | 18.0 | 17.4 |
| 18 | 17.9 | 16.0 | 20.0 | 19.4 |
| 20 | 19.9 | 18.0 | 22.0 | 21.4 |
| 22 | 21.9 | 20.0 | 24.0 | 23.4 |
| 24 | 23.9 | 22.0 | 26.0 | 25.4 |
| 26 | 25.9 | 24.0 | 28.0 | 27.4 |
| 28 | 27.9 | 26.0 | 30.0 | 29.4 |
| 30 | 29.9 | 28.0 | 32.0 | 31.4 |
| 34 | 33.9 | 32.0 | 36.0 | 35.4 |
| 36 | 35.9 | 34.0 | 38.0 | 37.4 |
| 40 | 39.9 | 38.0 | 42.0 | 41.4 |
| 44 | 43.9 | 42.0 | 46.0 | 45.4 |
| 48 | 47.9 | 46.0 | 50.0 | 49.4 |
| 50 | 49.9 | 48.0 | 52.0 | 51.4 |
| 60 | 59.9 | 58.0 | 62.0 | 61.4 |
| 64 | 63.9 | 62.0 | 66.0 | 65.4 |
| 68 | 67.9 | 66.0 | 70.0 | 69.4 |



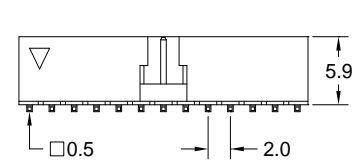
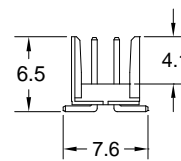
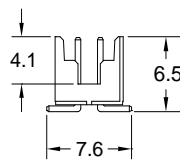
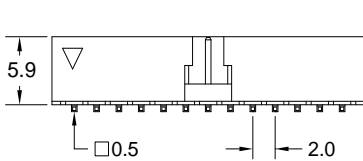
RECOMMENDED P.C.B LAYOUT



(TYPE A)



(TYPE B)



How to order: C72 - 1 - 2 - 3 - 4 - 5 - 6 - G(RoHS)

| 1.NO. OF CONTACT | 2.CONTACT MATERIAL | 3.CONTACT PLATING | 4. INSULATOR TYPE | 5.PACKAGING | 6.INSULATOR COLOR |
|---|--------------------|---|------------------------|---|-------------------|
| 06 08 10 12 14 16 18 20 22 24 26 28 30 34 36 40 44 48 50 60 64 68 | A: BRASS | T: TIN PLATED S: SELECTIVE G: GOLD FLASH A: 5u" INCH GOLD B: 10u" INCH GOLD C: 15u" INCH GOLD D: 30u" INCH GOLD | A: TYPE A B: TYPE B | A:TUBE WITH PAD B: TUBE W/O PAD C: TAPE & REEL WITH PAD | 1. BLACK |

