

# C79 BOX HEADER WITH LOCKING FUNCTION R/A

**PITCH: 2.0mm \* 2.0mm**

## SPECIFICATIONS

### Material

Insulator : LCP, glass reinforced, rated UL 94V-0

Contact : Brass

### Electrical

Current Rating : 1 Amp

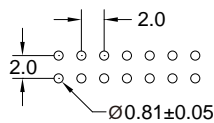
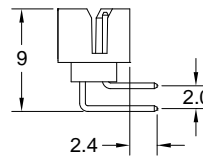
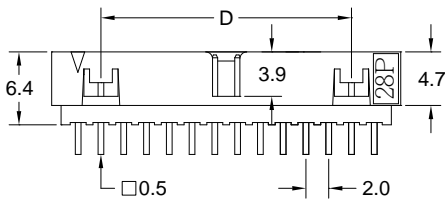
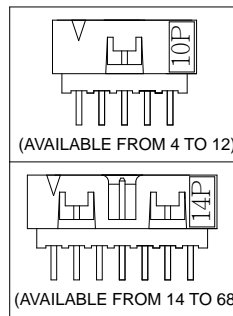
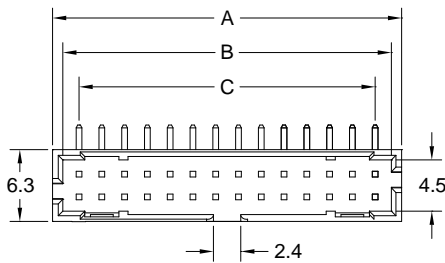
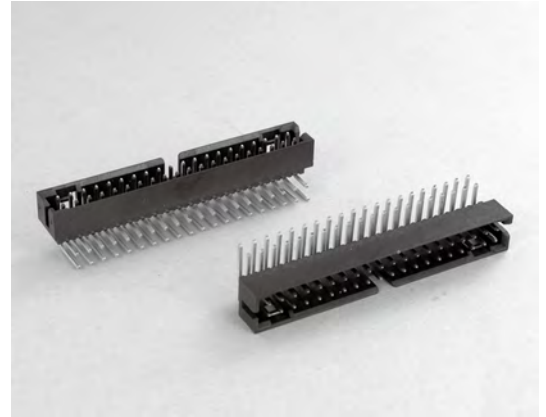
Contact Resistance : 30 mΩ max.

Insulation Resistance : 3000 MΩ min.

Dielectric Withstanding Voltage : 500V AC for 1minute

Operating Temperature : -40°C to +105°C

► Mating Suggestion : A05e & A58a series.



RECOMMENDED P.C.B LAYOUT

POSITION	A	B	C	D
4	6.65	4.85	2.00	--
6	8.65	6.85	4.00	--
8	10.65	8.85	6.00	--
10	12.65	10.85	8.00	--
12	14.65	12.85	10.00	--
14	16.65	14.85	12.00	8.00
16	18.65	16.85	14.00	10.00
18	20.65	18.85	16.00	12.00
20	22.65	20.85	18.00	14.00
22	24.65	22.85	20.00	16.00
24	26.65	24.85	22.00	18.00
26	28.65	26.85	24.00	20.00
28	30.65	28.85	26.00	22.00
30	32.65	30.85	28.00	24.00
32	34.65	32.85	30.00	26.00
34	36.65	34.85	32.00	28.00
36	38.65	36.85	34.00	30.00
38	40.65	38.85	36.00	32.00
40	42.65	40.85	38.00	34.00
42	44.65	42.85	40.00	36.00
44	46.65	44.85	42.00	38.00
46	48.65	46.85	44.00	40.00
48	50.65	48.85	46.00	42.00
50	52.65	50.85	48.00	44.00
68	70.65	68.85	66.00	62.00

**How to order:** C79 - 1 - 2 - 3 - 4 - G(RoHS)

1.NO. OF CONTACT	2.CONTACT MATERIAL	3.CONTACT PLATING	4.INSULATOR COLOR
04 06 08 10 12 14 16 18 20 22 24 26 28 30 32 34 36 38 40 42 44 46 48 50 68	A: BRASS	T: TIN PLATED S: SELECTIVE G: GOLD FLASH A: 5u" INCH GOLD B: 10u" INCH GOLD C: 15u" INCH GOLD D: 30u" INCH GOLD	1. BLACK