

C94 BOARD TO BOARD MALE HEADER STR

PITCH: 2.0mm * 2.0mm

SPECIFICATIONS

Material

Insulator : LCP, glass reinforced, rated UL 94V-0

Contact : Brass

Electrical

Current Rating : 1 Amp

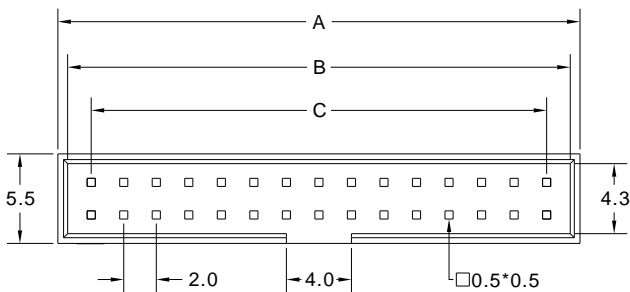
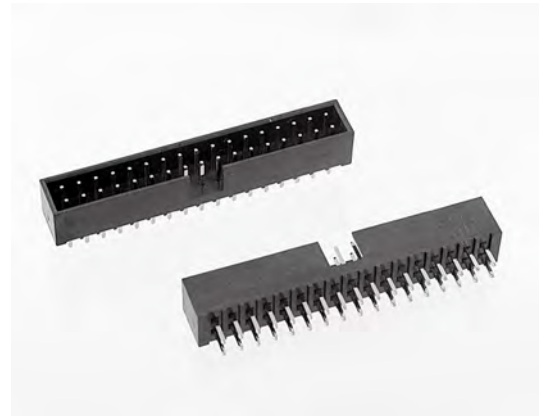
Contact Resistance : 30 mΩ max.

Insulation Resistance : 3000 MΩ min.

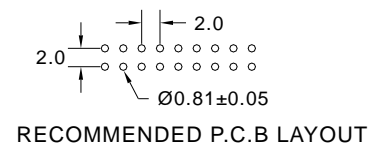
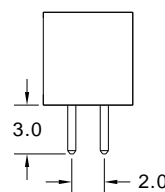
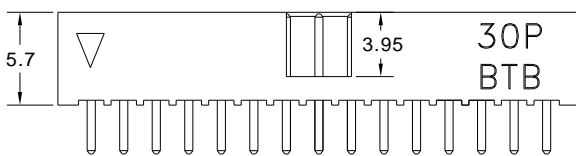
Dielectric Withstanding Voltage : 500V AC for 1minute

Operating Temperature : -40°C to +105°C

► Mating Suggestion : B13, B13b, B47 & B48 series.



POSITION	A	B	C
6	8.10	6.90	4.00
8	10.10	8.90	6.00
10	12.10	10.90	8.00
12	14.10	12.90	10.00
14	16.10	14.90	12.00
16	18.10	16.90	14.00
20	22.10	20.90	18.00
22	24.10	22.90	20.00
24	26.10	24.90	22.00
26	28.10	26.90	24.00
30	32.10	30.90	28.00
32	34.10	32.90	30.00
34	36.10	34.90	32.00
36	38.10	36.90	34.00
40	42.10	40.90	38.00
44	46.10	44.90	42.00
50	52.10	50.90	48.00
60	62.10	60.90	58.00
68	70.10	68.90	66.00
80	82.10	80.90	78.00



How to order: C94 - 1 - 2 - 3 - 4 - G(RoHS)

1.NO. OF CONTACT	2.CONTACT MATERIAL	3.CONTACT PLATING	4.INSULATOR COLOR
06 08 10 12 14 16 20 22 24 26 30 32 34 36 40 44 50 60 68 80	A: BRASS	T: TIN PLATED S: SELECTIVE G: GOLD FLASH A: 5u" INCH GOLD B: 10u" INCH GOLD C: 15u" INCH GOLD D: 30u" INCH GOLD	1. BLACK