

C100 BOX HEADER WITH LOCKING SYSTEM STR

PITCH: 2.0mm * 2.0mm

SPECIFICATIONS

Material

Insulator : LCP, glass reinforced, rated UL 94V-0

Contact : Brass

Electrical

Current Rating : 1 Amp

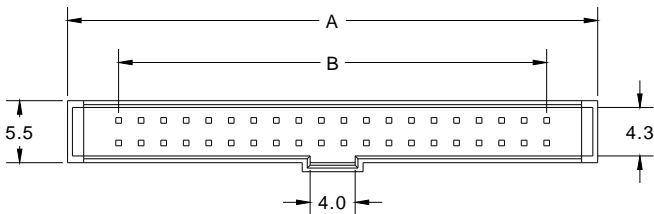
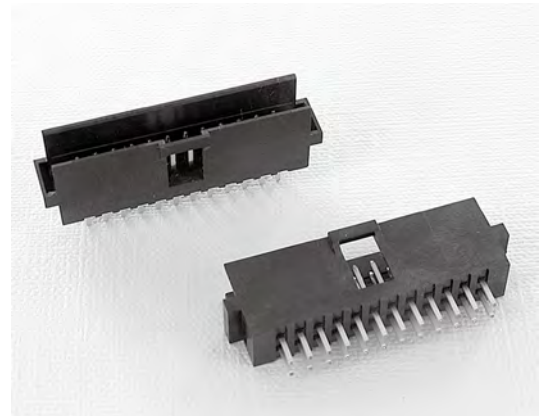
Contact Resistance : 30 mΩ max.

Insulation Resistance : 3000 MΩ min.

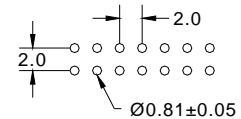
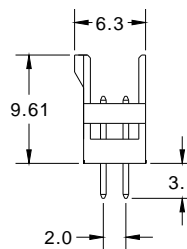
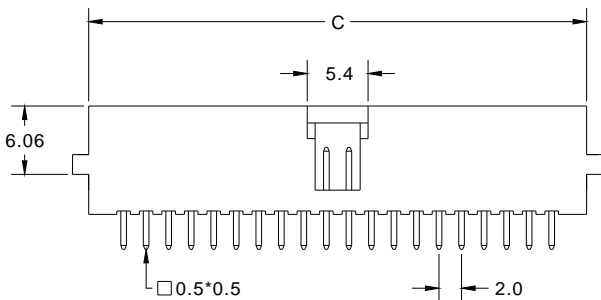
Dielectric Withstanding Voltage : 500V AC for 1minute

Operating Temperature : -40°C to +105°C

► Mating Suggestion : A65 & A66 series.



POSITION	A	B	C
6	13.06	4.00	10.20
8	15.06	6.00	12.20
10	17.06	8.00	14.20
12	19.06	10.00	16.20
14	21.06	12.00	18.20
16	23.06	14.00	20.20
20	27.06	18.00	24.20
22	29.06	20.00	26.20
24	31.06	22.00	28.20
26	33.06	24.00	30.20
30	37.06	28.00	34.20
34	41.06	32.00	38.20
40	47.06	38.00	44.20
44	51.06	42.00	48.20
50	57.06	48.00	54.20
68	75.06	66.00	72.20



RECOMMENDED P.C.B LAYOUT

How to order: C100 - 1 - 2 - 3 - 4 - G(RoHS)

1.NO. OF CONTACT	2.CONTACT MATERIAL	3.CONTACT PLATING	4.INSULATOR COLOR
06 08 10 12 14 16 20 22 24 26 30 34 40 44 50 68	A: BRASS	T: TIN PLATED S: SELECTIVE G: GOLD FLASH A: 5u" INCH GOLD B: 10u" INCH GOLD C: 15u" INCH GOLD D: 30u" INCH GOLD	1. BLACK