

C100a BOX HEADER WITH LOCKING SYSTEM R/A

PITCH: 2.0mm * 2.0mm

SPECIFICATIONS

Material

Insulator : LCP, glass reinforced, rated UL 94V-0

Contact : Brass

Electrical

Current Rating : 1 Amp

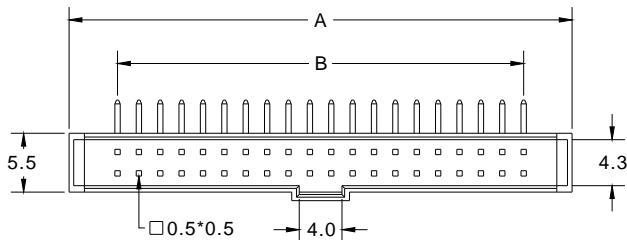
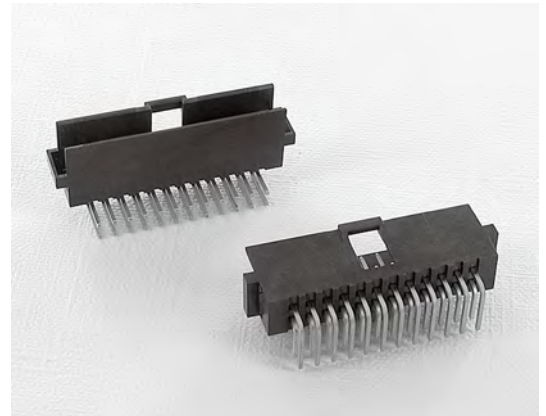
Contact Resistance : 30 mΩ max.

Insulation Resistance : 3000 MΩ min.

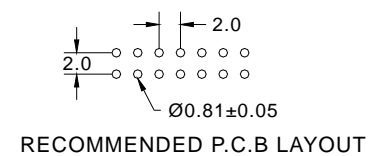
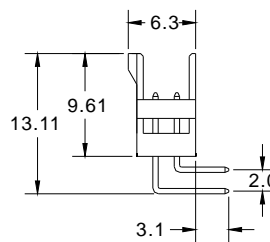
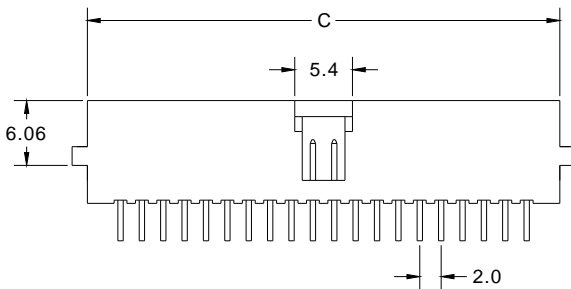
Dielectric Withstanding Voltage : 500V AC for 1minute

Operating Temperature : -40°C to +105°C

► Mating Suggestion : A65 & A66 series.



| POSITION | A | B | C |
|----------|-------|-------|-------|
| 6 | 13.06 | 4.00 | 10.20 |
| 8 | 15.06 | 6.00 | 12.20 |
| 10 | 17.06 | 8.00 | 14.20 |
| 12 | 19.06 | 10.00 | 16.20 |
| 14 | 21.06 | 12.00 | 18.20 |
| 16 | 23.06 | 14.00 | 20.20 |
| 20 | 27.06 | 18.00 | 24.20 |
| 22 | 29.06 | 20.00 | 26.20 |
| 24 | 31.06 | 22.00 | 28.20 |
| 26 | 33.06 | 24.00 | 30.20 |
| 30 | 37.06 | 28.00 | 34.20 |
| 34 | 41.06 | 32.00 | 38.20 |
| 40 | 47.06 | 38.00 | 44.20 |
| 44 | 51.06 | 42.00 | 48.20 |
| 50 | 57.06 | 48.00 | 54.20 |
| 68 | 75.06 | 66.00 | 72.20 |



How to order: C100a - 1 - 2 - 3 - 4 - G(RoHS)

| 1.NO. OF CONTACT | 2.CONTACT MATERIAL | 3.CONTACT PLATING | 4.INSULATOR COLOR |
|---|--------------------|---|-------------------|
| 06 08 10 12 14 16 20 22 24 26 30 34 40 44 50 68 | A: BRASS | T: TIN PLATED S: SELECTIVE G: GOLD FLASH A: 5u" INCH GOLD B: 10u" INCH GOLD C: 15u" INCH GOLD D: 30u" INCH GOLD | 1. BLACK |