

# C100b BOX HEADER WITH LOCKING SYSTEM SMT

**PITCH: 2.0mm \* 2.0mm**

## SPECIFICATIONS

### Material

Insulator : LCP, glass reinforced, rated UL 94V-0

Contact : Brass

### Electrical

Current Rating : 1 Amp

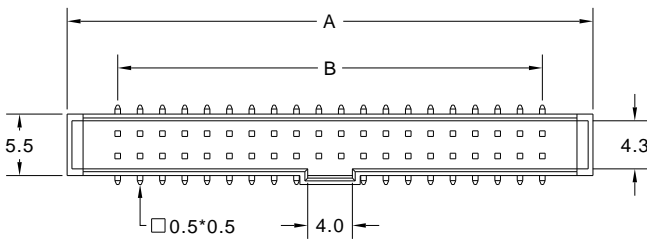
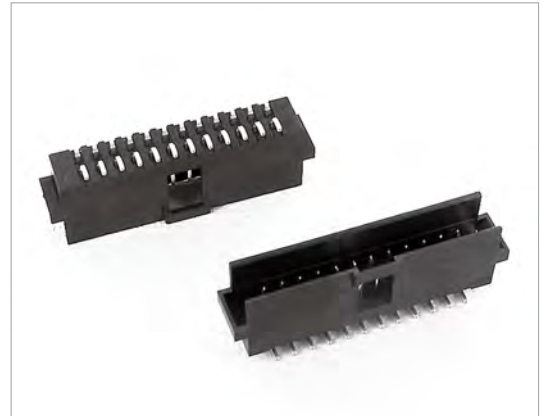
Contact Resistance : 30 mΩ max.

Insulation Resistance : 3000 MΩ min.

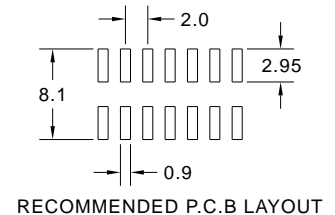
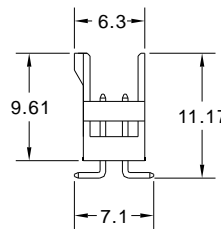
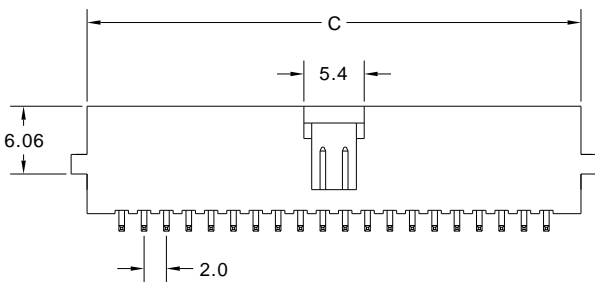
Dielectric Withstanding Voltage : 500V AC for 1minute

Operating Temperature : -40°C to +105°C

► Mating Suggestion : A65 & A66 series.



| POSITION | A     | B     | C     |
|----------|-------|-------|-------|
| 6        | 13.06 | 4.00  | 10.20 |
| 8        | 15.06 | 6.00  | 12.20 |
| 10       | 17.06 | 8.00  | 14.20 |
| 12       | 19.06 | 10.00 | 16.20 |
| 14       | 21.06 | 12.00 | 18.20 |
| 16       | 23.06 | 14.00 | 20.20 |
| 20       | 27.06 | 18.00 | 24.20 |
| 22       | 29.06 | 20.00 | 26.20 |
| 24       | 31.06 | 22.00 | 28.20 |
| 26       | 33.06 | 24.00 | 30.20 |
| 30       | 37.06 | 28.00 | 34.20 |
| 34       | 41.06 | 32.00 | 38.20 |
| 40       | 47.06 | 38.00 | 44.20 |
| 44       | 51.06 | 42.00 | 48.20 |
| 50       | 57.06 | 48.00 | 54.20 |
| 68       | 75.06 | 66.00 | 72.20 |



**How to order:** C100b - 1 - 2 - 3 - 4 - 5 - G(RoHS)

| 1.NO. OF CONTACT                                      | 2.CONTACT MATERIAL | 3.CONTACT PLATING   | 4.PACKAGING   | 5.INSULATOR COLOR |
|---|--------------------|---|---|-------------------|
| 06 08 10 12 14 16<br>20 22 24 26 30 34<br>40 44 50 68 | A: BRASS           | T: TIN PLATED<br>S: SELECTIVE<br>G: GOLD FLASH<br>A: 5u" INCH GOLD<br>B: 10u" INCH GOLD<br>C: 15u" INCH GOLD<br>D: 30u" INCH GOLD | A:TUBE WITH PAD<br>B: TUBE W/O PAD<br>C: TAPE & REEL WITH PAD | 1. BLACK          |