

C03a BOX HEADER WITH LOCKING STR

PITCH: 2.54mm * 2.54mm

SPECIFICATIONS

Material

Insulator : Nylon 66, glass reinforced, rated UL 94V-0

Contact : Brass

Electrical

Current Rating : 2 Amp

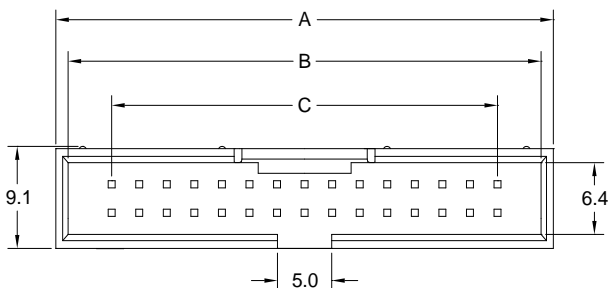
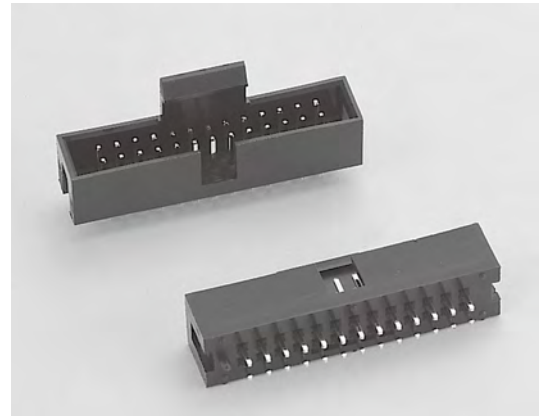
Contact Resistance : 30 mΩ max.

Insulation Resistance : 3000 MΩ min.

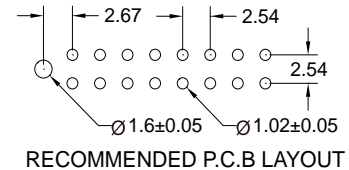
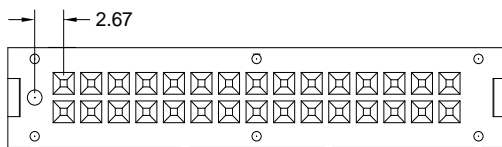
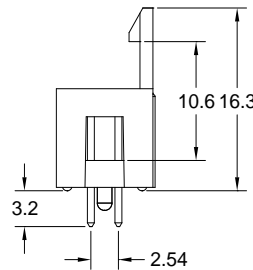
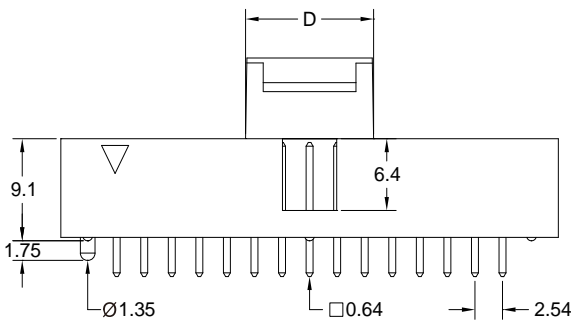
Dielectric Withstanding Voltage : 500V AC for 1minute

Operating Temperature : -40°C to +105°C

► Mating Suggestion : A01 & A35 series.



POSITION	A	B	C	D
10	20.45	18.19	10.16	7.80
14	25.53	23.27	15.24	7.80
16	28.07	25.81	17.78	9.80
20	33.15	30.89	22.86	9.80
26	40.77	38.51	30.48	11.80
30	45.85	43.59	35.56	11.80
34	50.93	48.67	40.64	11.80
40	58.55	56.29	48.26	11.80
50	71.25	68.99	60.96	11.80



How to order: C03a - 1 - 2 - 3 - 4 - G(RoHS)

1.NO. OF CONTACT	2.CONTACT MATERIAL	3.CONTACT PLATING	4.INSULATOR COLOR
10 14 16 20 26 30 34 40 50	A: BRASS	T: TIN PLATED S: SELECTIVE G: GOLD FLASH A: 5u" INCH GOLD B: 10u" INCH GOLD C: 15u" INCH GOLD D: 30u" INCH GOLD	1. BLACK

