

C03c ELEVATED BOX HEADER STR

PITCH: 2.54mm * 2.54mm

SPECIFICATIONS

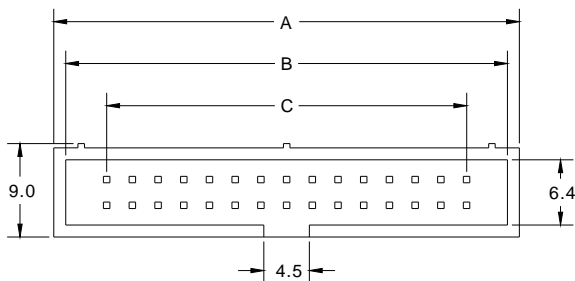
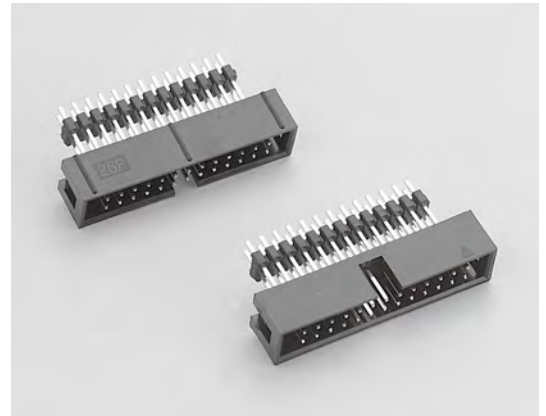
Material

Insulator : PBT, glass reinforced, rated UL 94V-0
 Contact : Phosphor Bronze or Brass

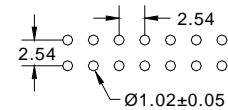
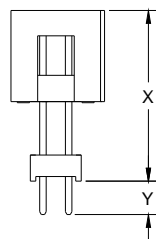
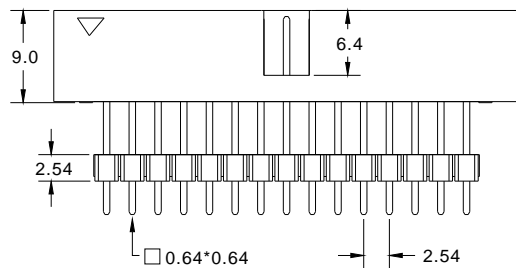
Electrical

Current Rating : 2 Amp
 Contact Resistance : 30 mΩ max.
 Insulation Resistance : 3000 MΩ min.
 Dielectric Withstanding Voltage : 500V AC for 1minute
 Operating Temperature : -40°C to +105°C

► Mating Suggestion : B06d, B06e, B06f, B07a, B22b, B27e & B27f series.



| POSITION | A | B | C |
|----------|-------|-------|-------|
| 6 | 15.22 | 13.02 | 5.08 |
| 8 | 17.76 | 15.56 | 7.62 |
| 10 | 20.30 | 18.10 | 10.16 |
| 12 | 22.84 | 20.64 | 12.70 |
| 14 | 25.38 | 23.18 | 15.24 |
| 16 | 27.92 | 25.72 | 17.78 |
| 20 | 33.00 | 30.80 | 22.86 |
| 24 | 38.08 | 35.88 | 27.94 |
| 26 | 40.62 | 38.42 | 30.48 |
| 30 | 45.70 | 43.50 | 35.56 |
| 34 | 50.78 | 48.58 | 40.64 |
| 40 | 58.40 | 56.20 | 48.26 |
| 44 | 63.48 | 61.28 | 53.34 |
| 50 | 71.10 | 68.90 | 60.96 |
| 60 | 83.80 | 81.60 | 73.66 |
| 64 | 88.88 | 86.88 | 78.74 |



RECOMMENDED P.C.B LAYOUT



How to order: C03c - 1 - 2 - 3 - 4 - 5 - G(RoHS)

| 1.NO. OF CONTACT | 2.CONTACT MATERIAL | 3.CONTACT PLATING | 4.INSULATOR COLOR | 5.LEAD STYLE |
|--|--------------------------------|---|-------------------|--------------|
| 06 08 10 12 14 16 20 24 26 30 34 40 44 50 60 64 | A: BRASS B: PHOSPHOR BRONZE | T: TIN PLATED S: SELECTIVE G: GOLD FLASH A: 5u" INCH GOLD B: 10u" INCH GOLD C: 15u" INCH GOLD D: 30u" INCH GOLD | 1. BLACK | X / Y |