

C03d SHRUNK BOX HEADER STR

PITCH: 2.54mm * 2.54mm

SPECIFICATIONS

Material

Insulator : PBT, glass reinforced, rated UL 94V-0

Contact : Brass

Electrical

Current Rating : 2 Amp

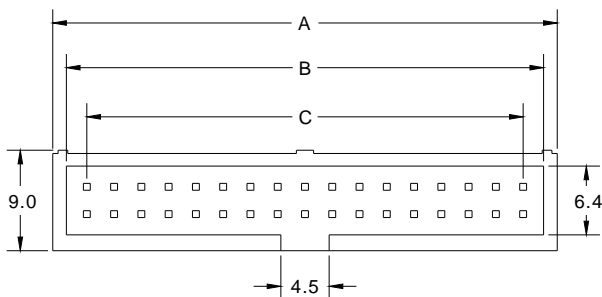
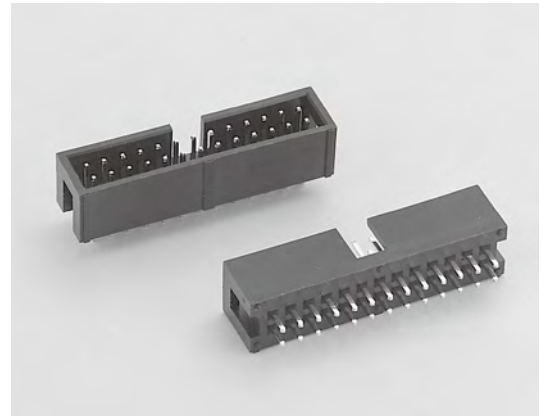
Contact Resistance : 30 mΩ max.

Insulation Resistance : 3000 MΩ min.

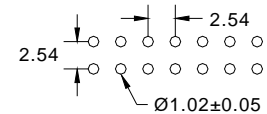
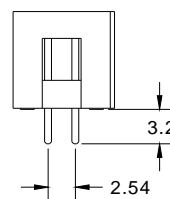
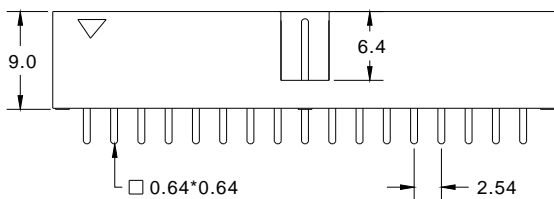
Dielectric Withstanding Voltage : 500V AC for 1minute

Operating Temperature : -40°C to +105°C

► Mating Suggestion : B06d, B06e, B06f, B07a, B22b, B27e & B27f series.



| POSITION | A | B | C |
|----------|-------|-------|-------|
| 6 | 11.43 | 8.89 | 5.08 |
| 8 | 13.97 | 11.43 | 7.62 |
| 10 | 16.51 | 13.97 | 10.16 |
| 12 | 19.05 | 16.51 | 12.70 |
| 14 | 21.59 | 19.05 | 15.24 |
| 16 | 24.13 | 21.59 | 17.78 |
| 20 | 29.21 | 26.67 | 22.86 |
| 24 | 34.29 | 31.75 | 27.94 |
| 26 | 36.83 | 34.29 | 30.48 |
| 30 | 41.91 | 39.37 | 35.56 |
| 34 | 46.99 | 44.45 | 40.64 |
| 40 | 54.61 | 52.07 | 48.26 |
| 44 | 59.69 | 57.15 | 53.34 |
| 50 | 67.31 | 64.77 | 60.96 |
| 60 | 80.01 | 77.47 | 73.66 |
| 64 | 85.09 | 82.55 | 78.74 |



RECOMMENDED P.C.B LAYOUT

How to order: C03d - 1 - 2 - 3 - 4 - G(RoHS)

| 1.NO. OF CONTACT | 2.CONTACT MATERIAL | 3.CONTACT PLATING | 4.INSULATOR COLOR |
|---|--------------------|---|---------------------|
| 06 08 10 12 14 16 20 24 26 30 34 40 44 50 60 64 | A: BRASS | T: TIN PLATED S: SELECTIVE G: GOLD FLASH A: 5u" INCH GOLD B: 10u" INCH GOLD C: 15u" INCH GOLD D: 30u" INCH GOLD | 1. BLACK 2. GREY |