

C40 DUAL ROW BOX HEADER (TWO WALL) STR

PITCH: 2.54mm * 2.54mm

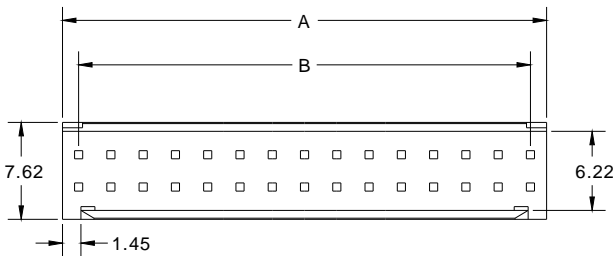
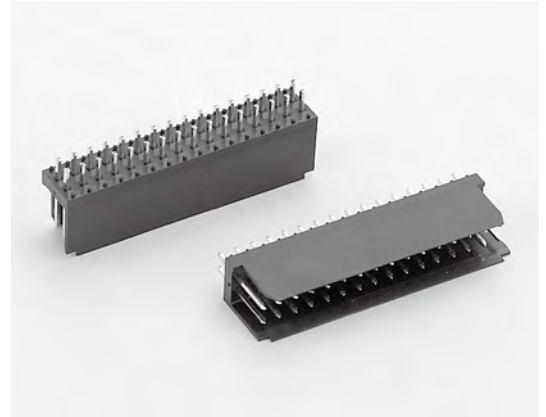
SPECIFICATIONS

Material

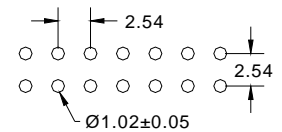
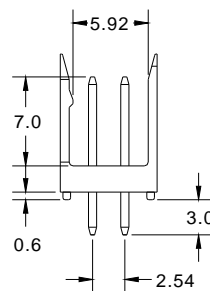
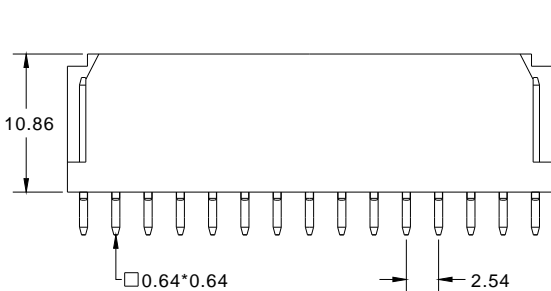
Insulator : PBT, glass reinforced, rated UL 94V-0
Contact : Brass

Electrical

Current Rating : 2 Amp
Contact Resistance : 30 mΩ max.
Insulation Resistance : 3000 MΩ min.
Dielectric Withstanding Voltage : 500V AC for 1minute
Operating Temperature : -40°C to +105°C
▶ Mating Suggestion : A40 & A40c series.



POSITION	A	B
4	5.08	2.54
6	7.62	5.08
8	10.16	7.62
10	12.70	10.16
12	15.24	12.70
14	17.78	15.24
16	20.32	17.78
18	22.86	20.32
20	25.40	22.86
22	27.94	25.40
24	30.48	27.94
26	33.02	30.48
28	35.56	33.02
30	38.10	35.56
32	40.64	38.10
34	43.18	40.64
36	45.72	43.18
38	48.26	45.72
40	50.80	48.26



RECOMMENDED P.C.B LAYOUT

How to order: C40 - 1 - 2 - 3 - 4 - G(RoHS)

1.NO. OF CONTACT	2.CONTACT MATERIAL	3.CONTACT PLATING	4.INSULATOR COLOR
04 06 08 10 12 14 16 18 20 22 24 26 28 30 32 34 36 38 40	A: BRASS	T: TIN PLATED S: SELECTIVE G: GOLD FLASH A: 5u" INCH GOLD B: 10u" INCH GOLD C: 15u" INCH GOLD D: 30u" INCH GOLD	1. BLACK