

C70 SINGLE ROW BOX HEADER R/A

PITCH: 2.54mm

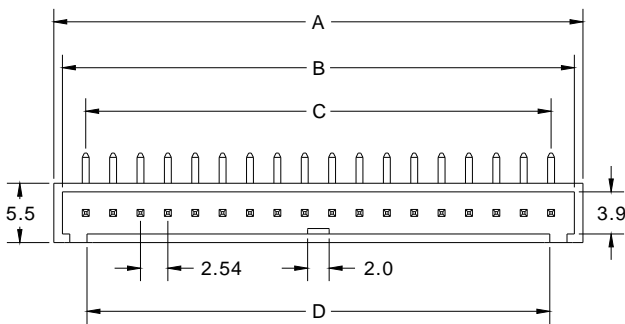
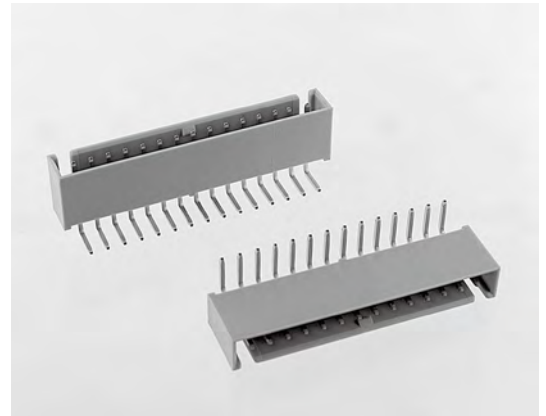
SPECIFICATIONS

Material

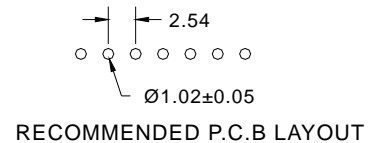
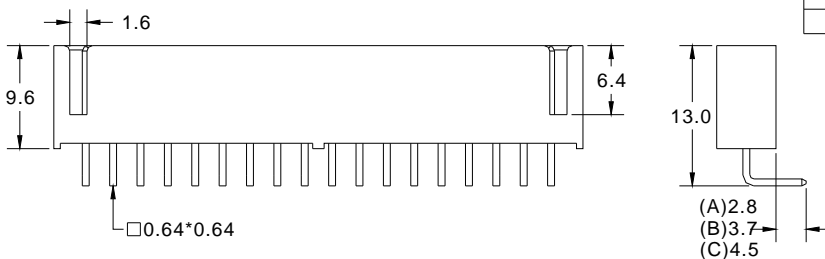
Insulator : PBT, glass reinforced, rated UL 94V-0
 Contact : Brass

Electrical

Current Rating : 2 Amp
 Contact Resistance : 30 mΩ max.
 Insulation Resistance : 3000 MΩ min.
 Dielectric Withstanding Voltage : 500V AC for 1minute
 Operating Temperature : -40°C to +105°C
 ► Mating Suggestion : A04d, B41 & B42 series.



| POSITION | A | B | C | D |
|----------|-------|-------|-------|-------|
| 4 | 13.54 | 11.94 | 7.62 | 7.38 |
| 5 | 16.08 | 14.48 | 10.16 | 9.92 |
| 6 | 18.62 | 17.02 | 12.07 | 12.46 |
| 7 | 21.16 | 19.56 | 15.24 | 15.00 |
| 8 | 23.70 | 22.10 | 17.78 | 17.54 |
| 9 | 26.24 | 24.64 | 20.32 | 20.08 |
| 10 | 28.78 | 27.18 | 22.86 | 22.62 |
| 11 | 31.32 | 29.72 | 25.40 | 25.16 |
| 12 | 33.86 | 32.26 | 27.94 | 27.70 |
| 13 | 36.40 | 34.80 | 30.48 | 30.24 |
| 14 | 38.94 | 37.34 | 33.02 | 32.78 |
| 15 | 41.48 | 39.88 | 35.56 | 35.32 |
| 16 | 44.02 | 42.42 | 38.10 | 37.86 |
| 17 | 46.56 | 44.96 | 40.64 | 40.40 |
| 18 | 49.10 | 47.50 | 43.18 | 42.94 |
| 19 | 51.64 | 50.04 | 45.72 | 45.48 |
| 20 | 54.18 | 52.58 | 48.26 | 48.02 |
| 21 | 56.72 | 55.12 | 50.80 | 50.56 |
| 22 | 59.26 | 57.66 | 53.34 | 53.10 |
| 23 | 61.80 | 60.20 | 55.88 | 55.64 |
| 24 | 64.34 | 62.74 | 58.42 | 58.18 |



How to order: C70 - 1 - 2 - 3 - 4 - 5 - G(RoHS)

| 1.NO. OF CONTACT | 2.CONTACT MATERIAL | 3.CONTACT PLATING | 4.PIN LENGTH | 5.INSULATOR COLOR |
|----------------------------------------------------------------------------|--------------------|------------------------------------------------------------------------------------------------------------------------------------------|----------------------------------|-------------------|
| 04 05 06 07 08 09 10 11 12 13 14 15 16 17 18 19 20 21 22 23 24 | A: BRASS | T: TIN PLATED S: SELECTIVE G: GOLD FLASH A: 5u" INCH GOLD B: 10u" INCH GOLD C: 15u" INCH GOLD D: 30u" INCH GOLD | A: 2.8mm B: 3.7mm C: 4.5mm | 2. GREY |