

C88a SHROUDED HEADER R/A

PITCH: 2.54mm * 2.54mm

SPECIFICATIONS

Material

Insulator : LCP, glass reinforced, rated UL 94V-0

Contact : Brass

Electrical

Current Rating : 2 Amp

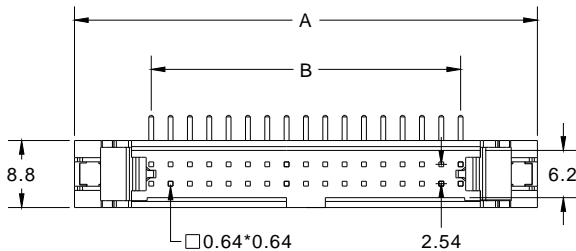
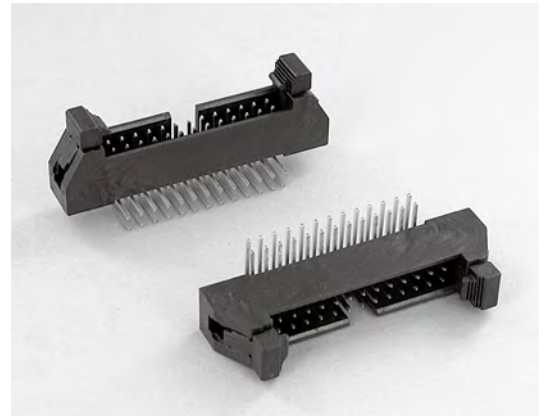
Contact Resistance : 30 mΩ max.

Insulation Resistance : 3000 MΩ min.

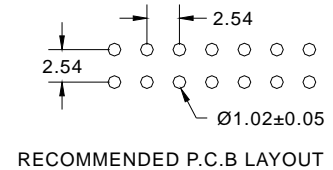
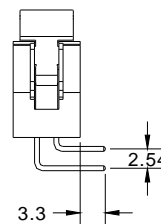
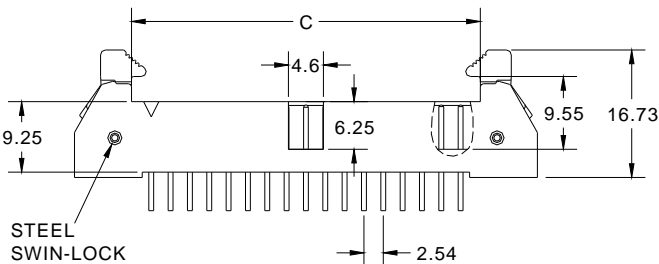
Dielectric Withstanding Voltage : 500V AC for 1minute

Operating Temperature : -40°C to +105°C

► Mating Suggestion: A01d series.



POSITION	A	B	C
6	25.25	5.08	10.26
8	27.79	7.62	12.80
10	30.33	10.16	15.34
12	32.87	12.70	17.88
14	35.41	15.24	20.42
16	37.95	17.78	22.96
20	43.03	22.86	28.04
24	48.11	27.94	33.12
26	50.65	30.48	35.66
30	55.73	35.56	40.74
34	60.81	40.64	45.82
40	68.43	48.26	53.44
50	81.13	60.96	66.14
60	93.83	73.66	78.84
64	98.91	78.74	83.92



How to order: C88a - 1 - 2 - 3 - 4 - G(RoHS)

1.NO. OF CONTACT	2.CONTACT MATERIAL	3.CONTACT PLATING	4.INSULATOR COLOR
06 08 10 12 14 16 20 24 26 30 34 40 50 60 64	A: BRASS	T: TIN PLATED S: SELECTIVE G: GOLD FLASH A: 5u" INCH GOLD B: 10u" INCH GOLD C: 15u" INCH GOLD D: 30u" INCH GOLD	1. BLACK

