

# C89 LOW PROFILE SHROUDED HEADER STR

**PITCH: 2.54mm \* 2.54mm**

## SPECIFICATIONS

### Material

Insulator : LCP, glass reinforced, rated UL 94V-0

Contact : Brass

### Electrical

Current Rating : 2 Amp

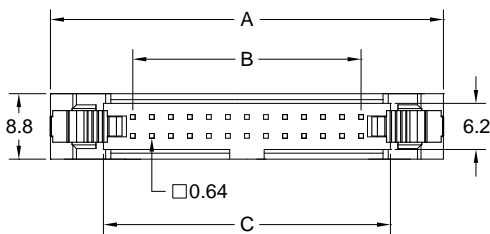
Contact Resistance : 30 mΩ max.

Insulation Resistance : 3000 MΩ min.

Dielectric Withstanding Voltage : 500V AC for 1minute

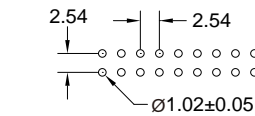
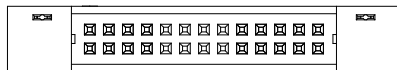
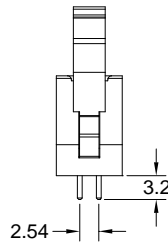
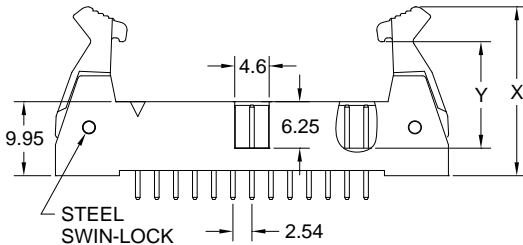
Operating Temperature : -40°C to +105°C

► Mating Suggestion : A01, A01e, A03a, A03b & A35 series.

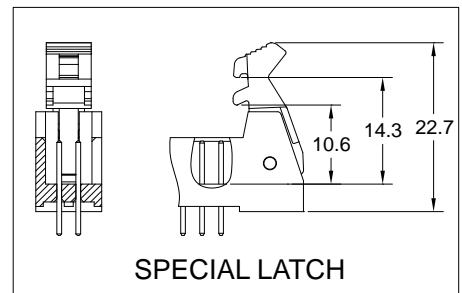


ACCESSORIES	X	Y
LONG LATCH	22.7	14.3
SHORT LATCH	21.2	10.6

POSITION	A	B	C
6	27.07	5.08	12.92
8	29.61	7.62	15.46
10	32.15	10.16	18.00
12	34.69	12.70	20.54
14	37.23	15.24	23.05
16	39.77	17.78	25.62
20	44.85	22.86	30.70
24	49.93	27.94	35.78
26	52.47	30.48	38.32
30	57.55	35.56	43.40
34	62.63	40.64	48.48
40	70.25	48.26	56.10
44	75.33	53.34	61.18
50	82.95	60.96	68.80
60	95.65	73.66	81.50
64	100.73	78.74	86.58



RECOMMENDED P.C.B LAYOUT



SPECIAL LATCH

**How to order:** C89 - 1 - 2 - 3 - 4 - 5 - G(RoHS)

1.NO. OF CONTACT	2.CONTACT MATERIAL	3.CONTACT PLATING	4.ACCESSORIES	5.INSULATOR COLOR
06 08 10 12 14 16 20 24 26 30 34 40 44 50 60 64	A: BRASS	T: TIN PLATED S: <b>SELECTIVE</b> G: GOLD FLASH A: 5u" INCH GOLD B: 10u" INCH GOLD C: 15u" INCH GOLD D: 30u" INCH GOLD	A: LONG LATCH B: SHORT LATCH C: SPECIAL LATCH	1. BLACK