

C89b LOW PROFILE SHROUDED HEADER SMT STR

PITCH: 2.54mm * 2.54mm

SPECIFICATIONS

Material

Insulator : LCP, glass reinforced, rated UL 94V-0

Contact : Brass

Electrical

Current Rating : 2 Amp

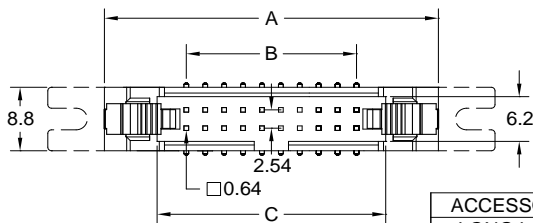
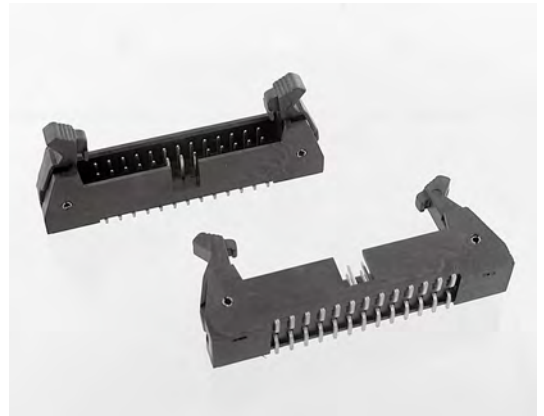
Contact Resistance : 30 mΩ max.

Insulation Resistance : 3000 MΩ min.

Dielectric Withstanding Voltage : 500V AC for 1minute

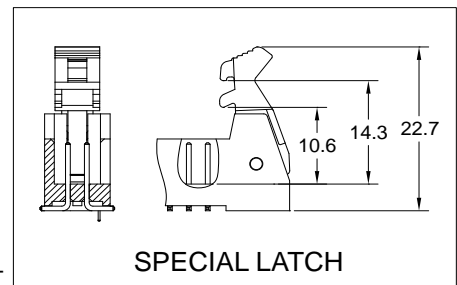
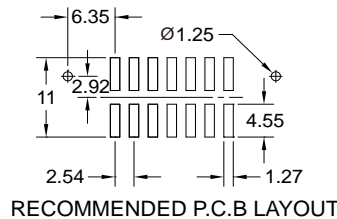
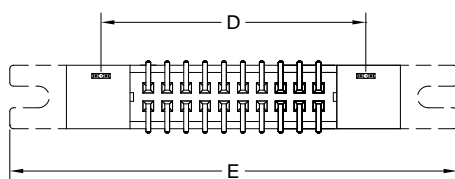
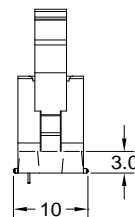
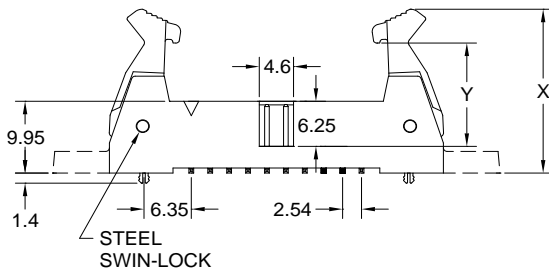
Operating Temperature : -40°C to +105°C

► Mating Suggestion: A01, A01e, A03a, A03b & A35 series



ACCESSORIES	X	Y
LONG LATCH	22.7	14.3
SHORT LATCH	21.2	10.6

POSITION	A	B	C	D	E
6	27.07	5.08	12.92	17.78	42.27
8	29.61	7.62	15.46	20.32	44.81
10	32.15	10.16	18.00	22.86	47.35
12	34.69	12.70	20.54	25.40	49.89
14	37.23	15.24	23.05	27.94	52.43
16	39.77	17.78	25.62	30.48	54.97
20	44.85	22.86	30.70	35.56	60.05
24	49.93	27.94	35.78	40.64	65.13
26	52.47	30.48	38.32	43.18	67.67
30	57.55	35.56	43.40	48.26	72.75
34	62.63	40.64	48.48	53.34	77.83
40	70.25	48.26	56.10	60.96	85.45
44	75.33	53.34	61.18	66.04	90.53
50	82.95	60.96	68.80	73.66	98.15
60	95.65	73.66	81.50	86.36	110.85
64	100.73	78.74	86.58	91.44	115.93



How to order: C89b - 1 - 2 - 3 - 4 - 5 - 6 - 7 - 8 - G(RoHS)

1.NO. OF CONTACT		2.CONTACT MATERIAL			3.CONTACT PLATING
06 08 10 12 14 16 20 24 26 30 34 40 44 50 60 64		A: BRASS			S: SELECTIVE
4.ACCESSORIES	5. SPECIAL FUNCTION	6. EAR	7.PACKAGING	8.INSULATOR COLOR	
A: LONG LATCH B: SHORT LATCH C: SPECIAL LATCH	A: WITH LOCKING CLIP B: W/O LOCKING CLIP	A: W EAR B: W/O EAR	A: TUBE WITH PAD B: TUBE W/O PAD C: TAPE & REEL WITH PAD	1. BLACK	